

THE **BOOTLEG** BEATLES

AND ORCHESTRA

Media Release

4 May 2012

International sensation **THE BOOTLEG BEATLES** make their debut in New Zealand

AUCKLAND – ASB Theatre – 18 to 21 October
WELLINGTON – St James Theatre – 25 to 28 October
CHRISTCHURCH – CBS Arena – 30 October

**‘They can safely say that they look and
sound as good as The Beatles’**

NME MAGAZINE, UK

Fifty years after The Beatles’ first recording session at Abbey Road Studios and their radio debut, which prompted one of the greatest developments in popular music, the world’s first and finest homage to the Fab Four – **THE BOOTLEG BEATLES** – announce their debut tour of New Zealand.

Now in their 33rd year, **THE BOOTLEG BEATLES** have performed almost 5,000 shows across the globe. Their stunning authenticity coupled with their musical credibility has seen them perform at some of the world’s best-known venues such as Wembley Stadium, the Royal Albert Hall, Knebworth, Glastonbury Festival and the Budokan Stadium in Tokyo, where The Beatles originally played.

They have shared the stage with the likes of Rod Stewart, Elton John, David Bowie, Bon Jovi, KD Lang, Iggy Pop, and were invited by Oasis to support them at their massive outdoor concerts in the mid nineties. They were also invited to perform at Queen Elizabeth’s Golden Jubilee celebration at Buckingham Palace.

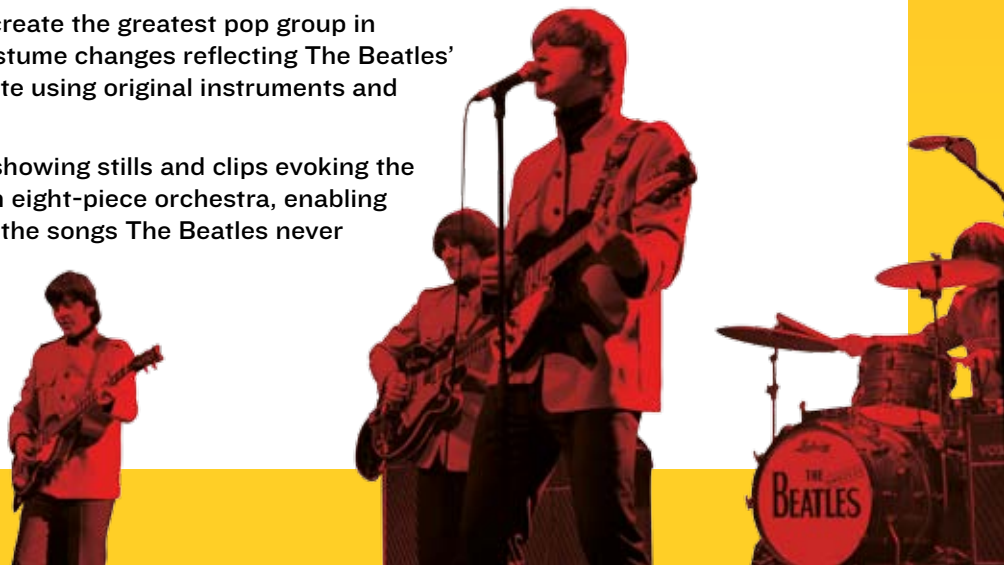
‘Flawless’

MOJO MAGAZINE, UK

And now, in October 2012 **THE BOOTLEG BEATLES** will be bringing their acclaimed show to Auckland, Wellington and Christchurch, performing their authentic renditions of the greatest songs from the entire Beatles catalogue, enabling New Zealand audiences to relive the magic of the era.

THE BOOTLEG BEATLES re-create the greatest pop group in history from top to toe, with four costume changes reflecting The Beatles’ evolution, as well as from note to note using original instruments and with uncannily accurate vocals.

Against a stunning video backdrop showing stills and clips evoking the 60s, they will be accompanied by an eight-piece orchestra, enabling them to faithfully re-create many of the songs The Beatles never played live on stage, such as *Eleanor Rigby*, *Penny Lane* and *All You Need is Love*.



THE ^{BOOTLEG} BEATLES

AND ORCHESTRA

'Sheer technical perfection'

LONDON EVENING STANDARD

Producer James Cundall, CEO of Lunchbox Theatrical Productions, said "**THE BOOTLEG BEATLES** are quite simply astounding – every minute detail of their performance has been researched and is delivered with such authenticity you can't believe you're not at a Beatles concert back in the 60s! I am truly delighted to be bringing such a top international act to New Zealand for the first time."

THE BOOTLEG BEATLES was formed in 1980 by Neil Harrison (the original Bootleg John Lennon) and Andre Barreau (current Bootleg George Harrison) who met when they were performing in the West End production of *Beatlemania*. They and the two other band members signed up with former Beatles manager Brian Epstein's Agency NEMS. Within two years **THE BOOTLEG BEATLES** had become the first western rock group to tour the Soviet Union, going on to tour India, the Middle East, the Far East, the USA and establish their now annual UK Theatre tour.

As well as playing in front of Sir Paul McCartney **THE BOOTLEG BEATLES** performed in front of George Harrison at Pink Floyd frontman Dave Gilmour's 50th birthday party, after which the Beatle admitted to the Bootlegs that they "probably know the chords better than I do".

Producer and Founder Neil Harrison, who performed as John Lennon for 31 years, said, "I suppose what was special about The Bootleg Beatles was our ability to be able to deliver not just the music and look of the Fab Four but the whole atmosphere of that band in performance. This knack probably came from being steeped in 'all things Beatle' from a very early age! We were all huge fans with a capital F."

THE BOOTLEG BEATLES are one of Britain's most popular bands, with fans of all ages across the globe greeting their note-perfect performance with scenes of Beatle-like hysteria.

THE BOOTLEG BEATLES tour of New Zealand is produced by Lunchbox Theatrical Productions, which is bringing *Riverdance* to New Zealand in May/June, The Imperial Ice Stars' *The Nutcracker on Ice* in July, and over the last two years has brought *The Music of Andrew Lloyd Webber*, *Rick Stein*, *Grease*, and *Swan Lake on Ice* to New Zealand audiences.

'Fastidiously authentic'

THE DAILY TELEGRAPH, UK

TICKETS ON SALE 4 MAY

AUCKLAND – ASB Theatre – 18 to 21 October

WELLINGTON – St James Theatre – 25 to 28 October

CHRISTCHURCH – CBS Arena – 30 October

TICKET PRICES

Prices (inclusive of inside charge and booking fees)

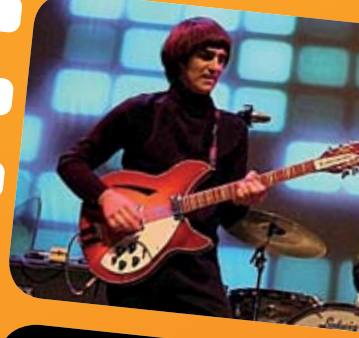
Premium - \$99.90

A Reserve - \$89.90

B Reserve - \$79.90

C Reserve - \$69.90

Groups 10+ A Reserve - \$79.90



THE ^{BOOTLEG} BEATLES

AND ORCHESTRA

SEASON DETAILS

AUCKLAND

VENUE: ASB Theatre

SEASON: Thursday 18 to Sunday 21 October 2012

TIMES*: Thursday 7.30pm, Friday 7.30pm, Saturday 2.30pm & 7.30pm, Sunday 5pm

0800 BUY TICKETS or buytickets.co.nz

Group Bookings 10+ SAVE! Telephone Group Bookings or email groups@the-edge.co.nz

WELLINGTON

VENUE: St James

SEASON: Thursday 25 October to Sunday 28 October 2012

TIMES*: Thursday 7.30pm

Friday 7.30pm, Saturday 2.30pm & 7.30pm, Sunday 5pm

0800 TICKETEK or ticketek.co.nz

Group Bookings 10+ SAVE! Telephone Group Bookings or email groups@ticketek.co.nz

CHRISTCHURCH

VENUE: CBS Arena

SEASON: Tuesday 30 October 2012

TIME*: 7.30pm

0800 TICKETEK or ticketek.co.nz

Group Bookings 10+ SAVE! Telephone Group Bookings or email groups@ticketek.co.nz

* Performance times may be subject to change without notice.

For media inquiries, contact:

Sandra Roberts 021525104 or email Sandra@skip.co.nz

Print quality photos @ www.skip.co.nz

www.lunchbox-productions.com

